

DigiRad

digital radiography

Portable Xray Solution in Digital Security Inspection



XSharp

Portable solution
Latest advances embedded

Portability: 100% operated with batteries and wireless
First portable system totally **free of cables**
New! Unique case for easy transport and field design with working components in hard conditions

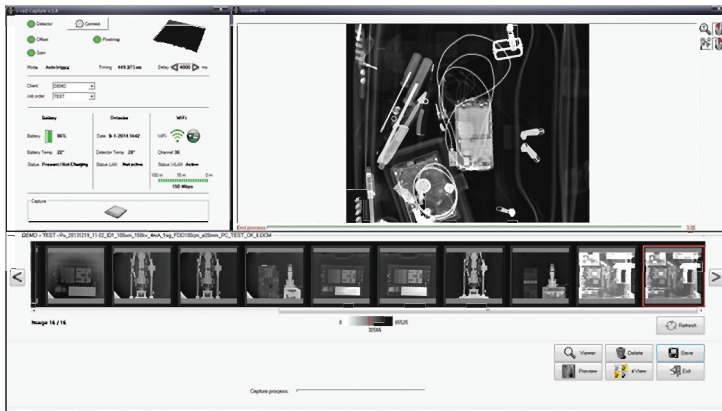
Latest Technology: Wireless x-ray flat panel detector with maximum resolution for small object detection and the **best** automatic image quality with minimum noise and maximum contrast

Designed for maximum operator safety: Safe distance with only one approach. Low doses with short exposures that assures maximum operator safety using 100m operation distance

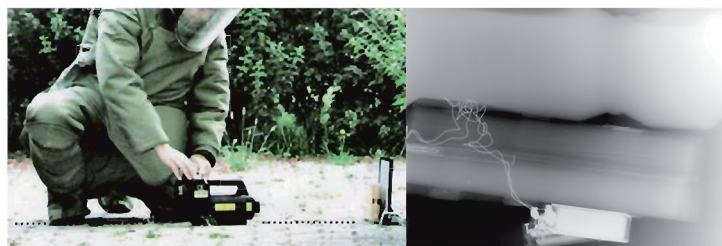
Advanced software with latest features: Resume experience in developing digital radiography applications in the last 15 years. Incorporating:

sec-rad
radiography in security

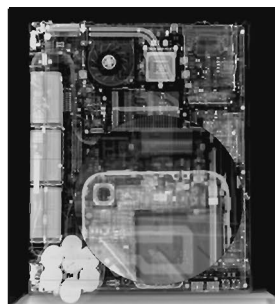
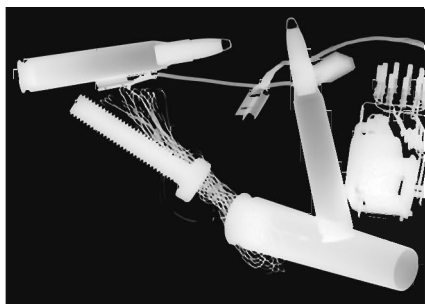
> > > > >



Detection of smuggled explosives, drugs and contraband for customs inspections

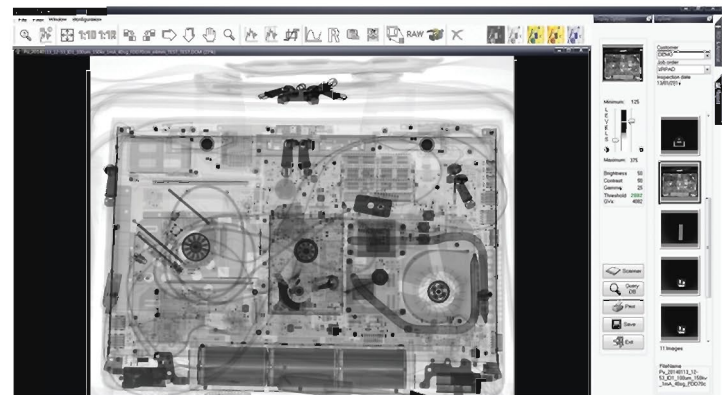


Wireless without cables facilitate work without contaminating the scene with wires



Easily reveal tiny details and minimal changes in devices which might indicate security breaches and miniature listening devices

- sr** **Automatic setup** for instant images on screen in < 5 sec (variable time depending of wireless distance)
- sr** True Plug&Play detector with a set of valuable automatic security software features
- New!** **sr** Plug&Play advance security features with High Resolution images using a **Leader-in class 100 µm pixel pitch** detector
- sr** Wide **centered** and **thinnest** 35cm x 43cm x 15cm Detector image area
- sr** Direct deposition CsI:TI, for excellent image quality
- New!** **sr** **Wireless detector 802.11ac with wifi built-in**
- sr** **Auto Trigger** & Compatibility with X-Rays CP & Pulsed Real steel penetration of 15mm or 25mm
- sr** Side-slot inserted rechargeable Litium-Ion battery 5 hours operation using one charge
- sr** Industry Leading 14 bit (16384 grayvalues) Image Quality
- New!** **sr** Exclusive and new powerful **SMD (Software Material Discrimination)** module. **Organic / Inorganic detection in real time**
- sr** Complete Software suite, developed exclusively for Security



Detector

Full wireless built-in flat panel detector, light weight (3.5kg) for digital radiography with embedded rechargeable battery and single-piece carbon-fiber for the front and back housing that allows easy placement and cleaning.

Panel Single substrate amorphous silicon activeTFT/diode array

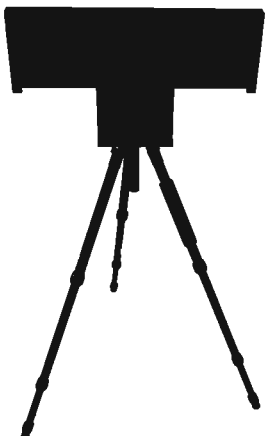


Scintillator Direct deposition CsI:Tl
 Pixel Matrix 3556 x 4320
 Pixel Pitch 100 µm & 5 lp/mm
 ADC 14 bit
 Integration time 400 ms
 Wireless 802.11ac with wifi built in
 Protection Protective robust case with handle and carbon fiber in exposure face
 Battery LBP Rechargeable 4.5 hours Litium-Ion



Battery charger LBC External 2 bay charger 100 - 240V AC 50/60 Hz

Accessories

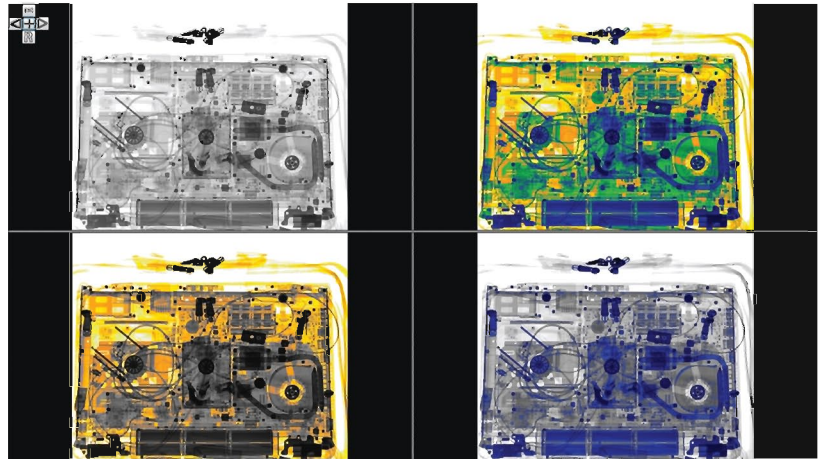


Portrait and landscape support for external applications
 Light magnesium adjustable tripod



sec-rad[®] Software

DR Detector control 100% integrated and controlled (WiFi, battery, temperature, signal/distance, channel)
 Exposure Indicator Computed for Each Image
 Image Review Window/Level, Pan, Zoom, Flip, Rotate, Invert, Aut. LUT Management, Annotate, Magnifying Glass, Stitching, ROI's
 Measurements Manual and automatic in different modules
 Image Processing (Based on inspection type) Automatic in capture. Specific Security filters Automatic Window/Level Determination
 SMD (v. 1.5) Software Material Discrimination. Metals, organic & inorganic.



Database SQL Full Security Database
 Image Output DCM, TIFF, JPEG
 Reports Automatic using PDF Adobe

Computer (Recommended minimum specification)

Computer Laptop / Tablet Intel i5, 3.0 GHz
 Installed Memory 4 GB (RAM)
 Display LED+ , Color 1920x1080
 Operating System Windows 8 64 bit
 Storage 500GB SSD. External USB3 Disk
 Imaging Network TCP/IP & WiFi 802.11ac



DigiRad
 digital radiography